

IDENTITY

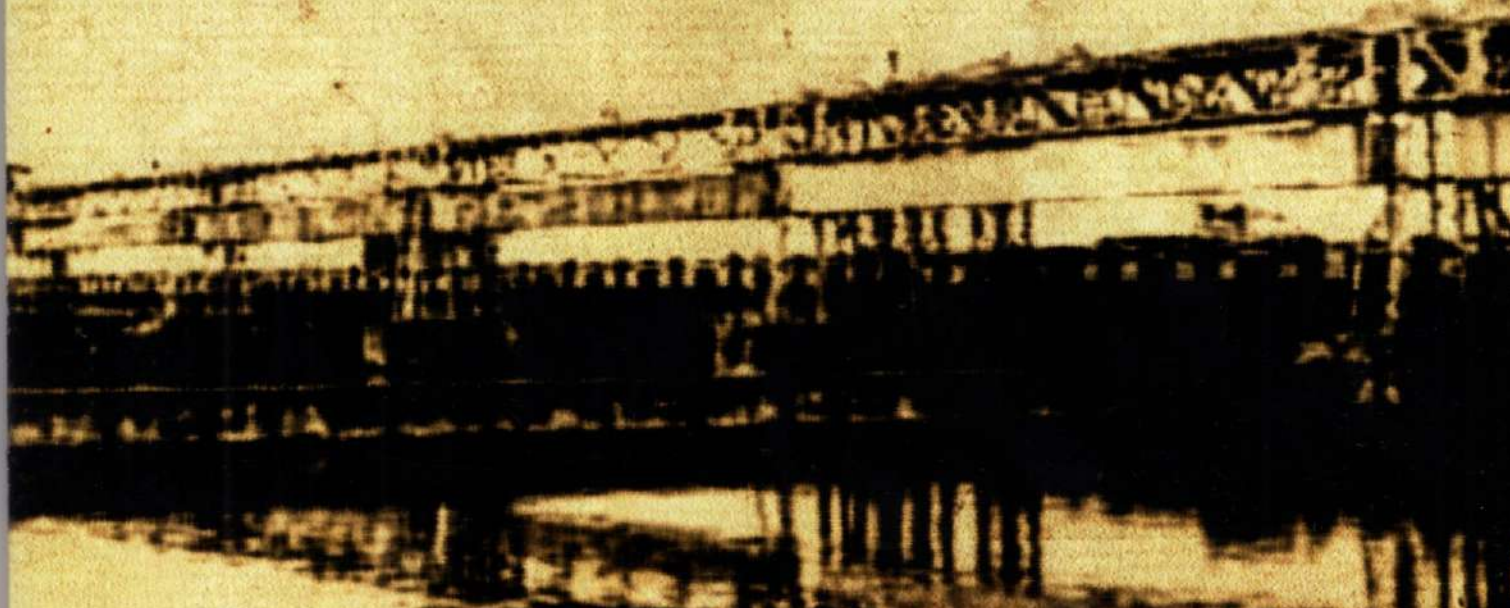
EAST
DURGAPUR
MAKES A
MOVE TO A
NEW
LIFESTYLE

HIRA REG. NO - HIRAVP
/PAS/2019/000694

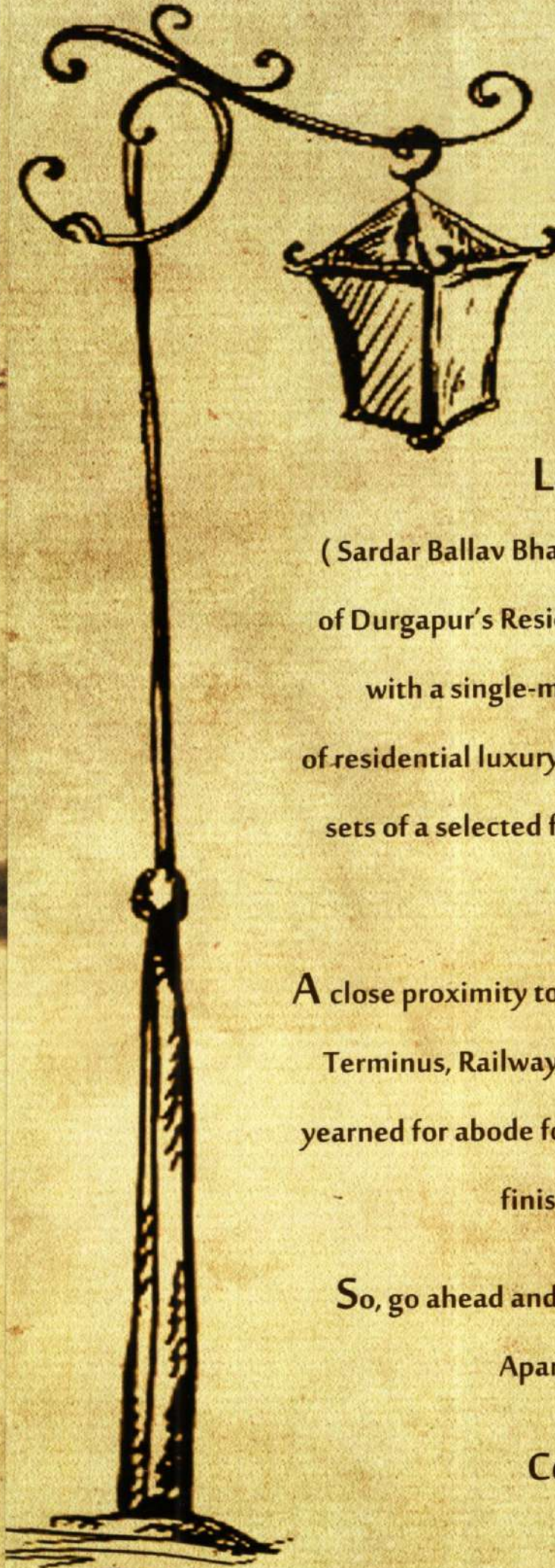
Durgapur the wildest emerging city of West Bengal, it is rising to become one of the mega cities of Eastern India. Durgapur, popularly known as the Steel city of Eastern India, is varying its image and emerging also in the fields of medical and education to become one of the multipurpose cities of India. Durgapur has an enormous base of industries and their glowing townships. City Centre is the nucleus of Durgapur's city administration when Bidhannagar is the heart of Residential zones. It also getting renowned for its growing medical facilities and educational institutes. It has many famous schools, colleges and other institutions. In the field of entertainment it has many entertainment centres, richly known clubs wide range of shopping malls, magnificent parks and picnic spots. Durgapur takes pride in its cultural activities though being a relatively coming up new city.



FROM TODAY TO TOMORROW....



As one century gave way to the next, life in durgapur changed at an aggressive pace. Lifestyle took on new look and speed replaced repose. On the otherhand East Durgapur, namely shankarpur, which got caught up in a time wrap continues to be associated with run down appartments and leasurely lifestyle present with all the mordern ameniteis possible alongwith.



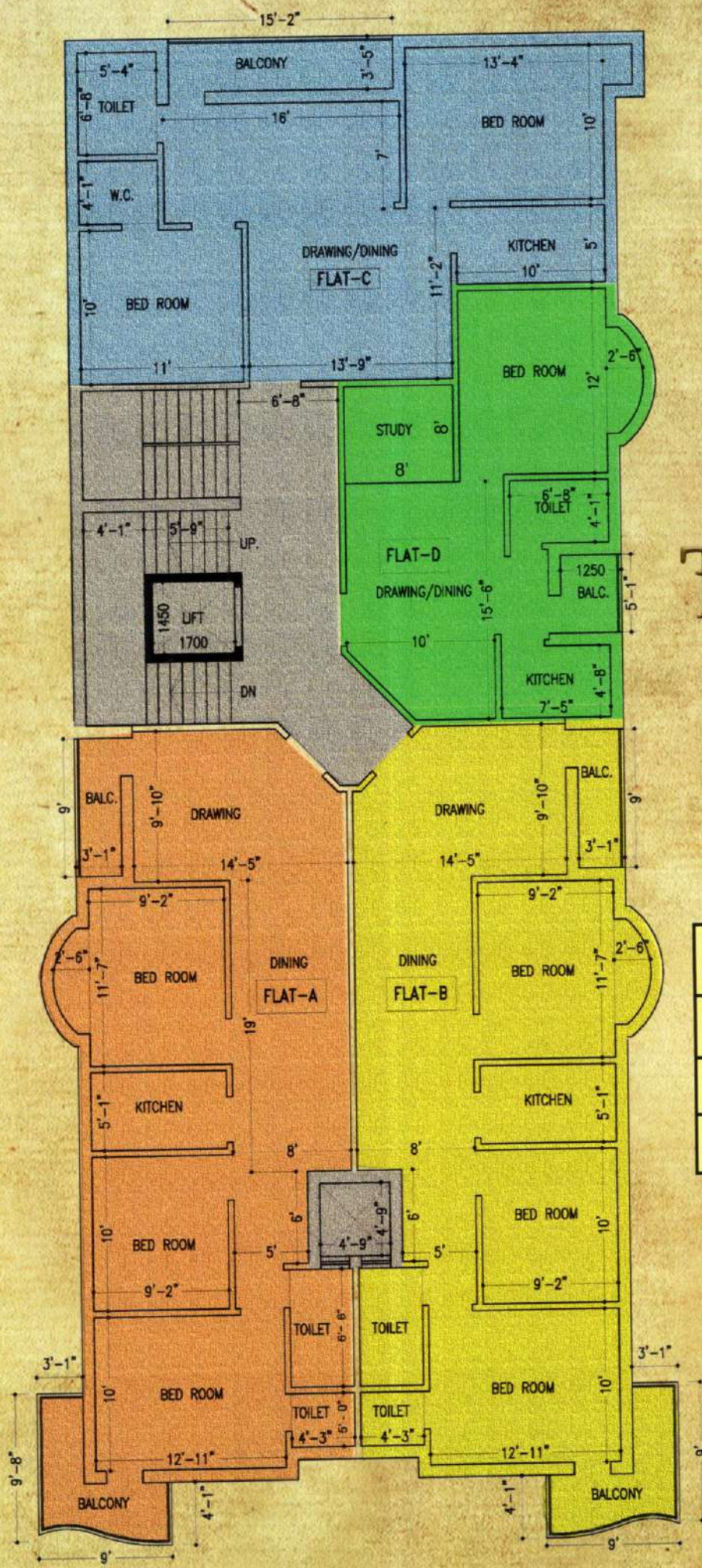
Located on the heart line

(Sardar Ballav Bhai Patel Road) of Durgapur, the threshold of Durgapur's Residential zone, "IDENTITY" is conceived with a single-minded objective to create a new level of residential luxury and crafted to match the tastes and mind sets of a selected few who aspire for a unique living within budgetary comforts.

A close proximity to Schools, Colleges, Hospitals, Markets, Bus Terminus, Railway Station & Airport, IDENTITY is a much yearned for abode for your family with latest amenities, plush finisher and Vastu compliance.

So, go ahead and chose from a range of 1, 2 & 3 Bedroom Apartments and feel how you...

Celebrate your life...



TYPICAL FLOOR PLAN

FLAT	TYPE	Area/Sq.ft.
A & B	3 BHK	1250
C	2.5 BHK	1025
D	1.5 BHK	645

FURNITURE & SITE LAYOUT





|| STAR ATTRACTIONS ||



Adequate Parking



24/7 Power Backup



Concept Gym



CCTV Surveillance



Indoor Play Area



Telescopic Lift



24/7 Security Service



Recreational Centre



Rooftop Garden

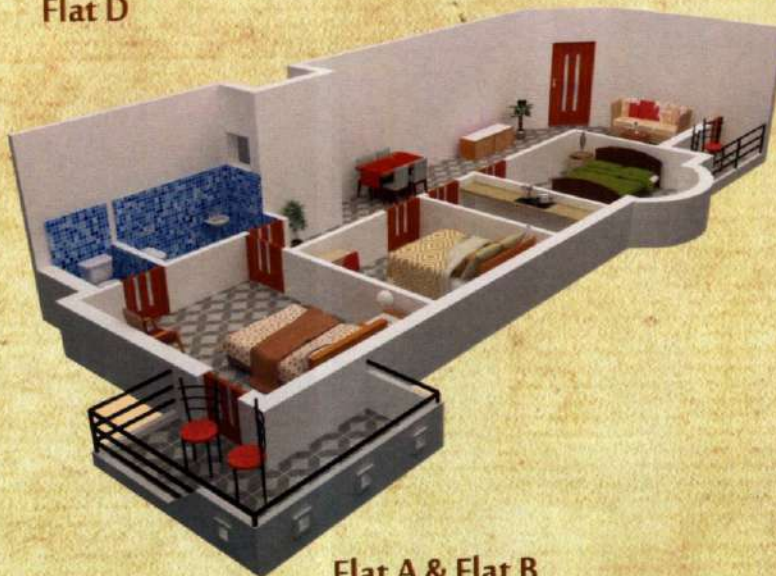
ORIENTAL VIEW



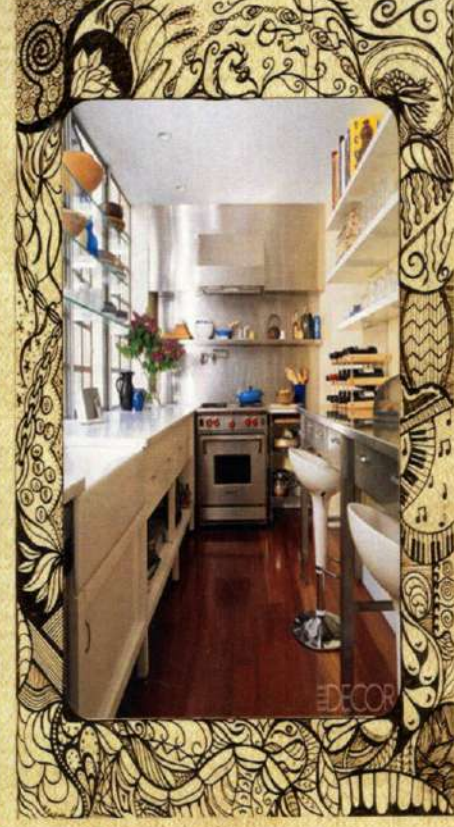
Flat D



Flat C



Flat A & Flat B



|| STAR SPECIFICATIONS ||




- Structure :- Frame Work :-** Earthquake resistant RCC framed construction within infill brick work
- Finish :- External :-** Combination of water proof & texture paint finish
Internal :- Living/Dining/Bed rooms: Smooth wall putty
 lift lobbies & Stairs : marbel/ kota flooring & paints
- Flooring :- Internal :-** living/dining/bed rooms : Vitrified tiles with skirtings
- Kitchen :- Flooring :-** Anti-skid Ceramic Tiles
Wall :- Ceramic Tiles upto 2ft above cooking top and rest smooth wall putty.
- Others :-** Granite counter with SS Sink, Provision for exhaust fan
- Toilets :- Flooring :-** Anti-skid Ceramic Tiles
Wall :- Ceramic Tiles upto door top level and rest smooth wall putty
- Fittings :-** Concealed Pipe line with superior quality Sanitary fittings. Hot and cold water system for common bathroom
- Others :-** Provision for Gyser and exhaust fans
- Doors :-** Seasoned Hardwood Frames with flush door
- Windows :-** Anodized Aluminium sliding window with ms grills
- Electricals :-** Copper electrical wiring throughout concealed conduit with protective M.C.B and provision for AC points in bedrooms, Light and fan points, Refrigerator & Washing machinepoints. TV & Intercom connectivity.




Location Maps

Disclaimers:- All drawings, amenities, facilities, etc. shown in this leaflet are subject to change as per the approval from the respective authorities. The final discretion remains with the developers



Location Advantages

-  Hospitals:- 5 mins
-  Markets:- 5 mins
-  Bus Stops:- 3 mins

-  Colleges:- 7 mins
-  Schools:- 5 mins
-  Railway Station:- 10 mins

Dome



City Office:- Shankarpur, Bidhannagar, Durgapur, Burdwan - 713206.

Reg. Office:- 9/12, Lal Bazar Street, Block A, 1st Floor, Room No:- 13, Kolkata - 700001



7098052529