



THE FINEST IN
UPSCALE
Apartment Living

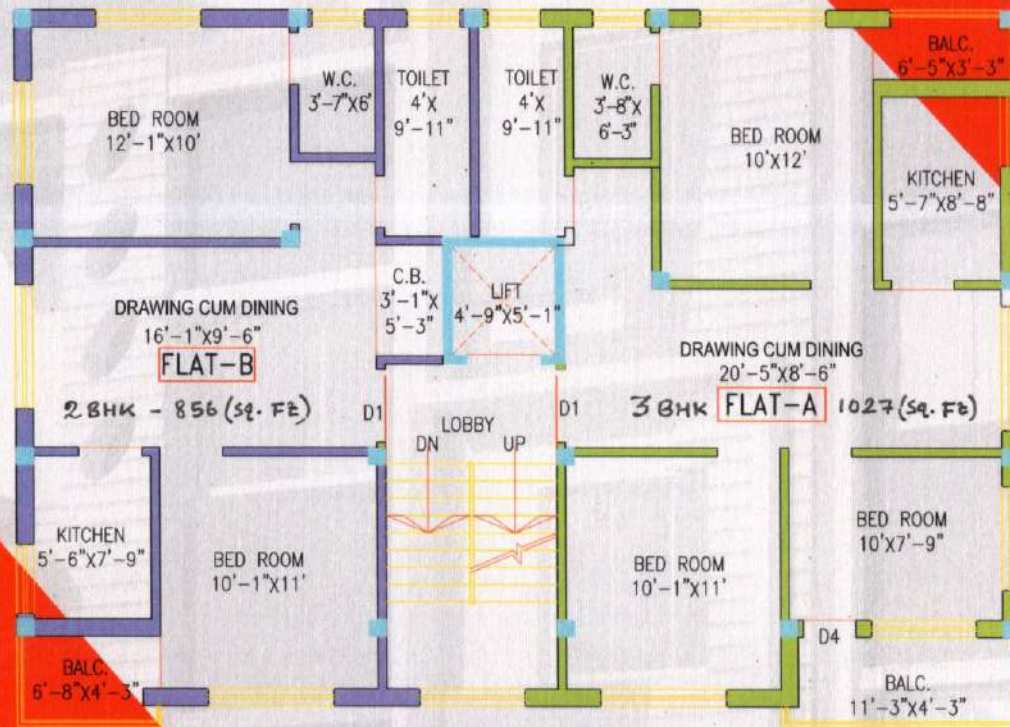
- *Stone throw distance from NH 2*
- *2 mins. from Rajbandh More*
- *5 mins. from Rajbandh Railway Station*

Shantinoyee Uttara

After the successful completion of **Shantimoyee Niwass** at Saptarshi Park, Bidhannagar, Durgapur ...

Here's *Shantimoyee Uttara*

at Rajbandh, Durgapur, Paschim Bardhaman



TYPICAL FLOOR PLAN

External Structure :

RCC Framed Structure.

Wall Finish Interior :

Conventional Brickwork with Cement putty.

Flooring :

Ceramic Tiles - All Bedrooms & Living Rooms.

Doors & Windows :

Doors - Laminated Flush door,
Fittings - Godrej or equi. night latch,
eyepiece and handles.

Electrical Fittings :

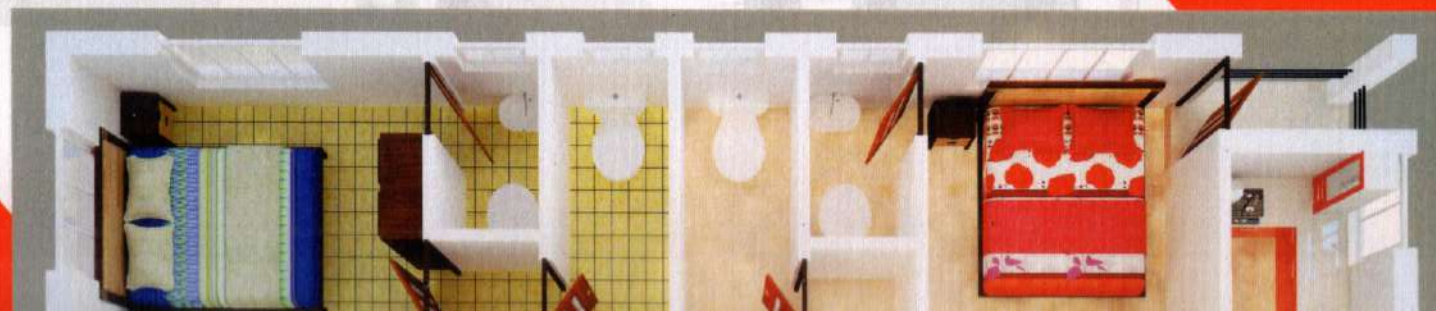
A. C Point in one Bedroom, Cable TV and Intercom point,
15 amp & 5 amp electrical points, Concealed Copper
Wiring with Central MCB / RCB of reputed make.
Door Bell point at the main entrance door.

Modular Switches.

Kitchen :

Heavy Duty/anti skid ceramic tiles on
Floor. Granite platform & stainless
steel sink. Dado upto 2 ft. above
the counter/platform.

Electric Point for
refrigerator,
water purifier,
exhaust fan.





FURNITURE LAYOUT

Toilet :

White Sanitary ware of reputed make Heavy duty/anti skid ceramic tiles on floor. Glazed ceramic tiles on the walls upto 7 ft. height. CP Fittings of reputed make. Electric point for geyser and exhaust fan. Hot & cold water (in 1 toilet)

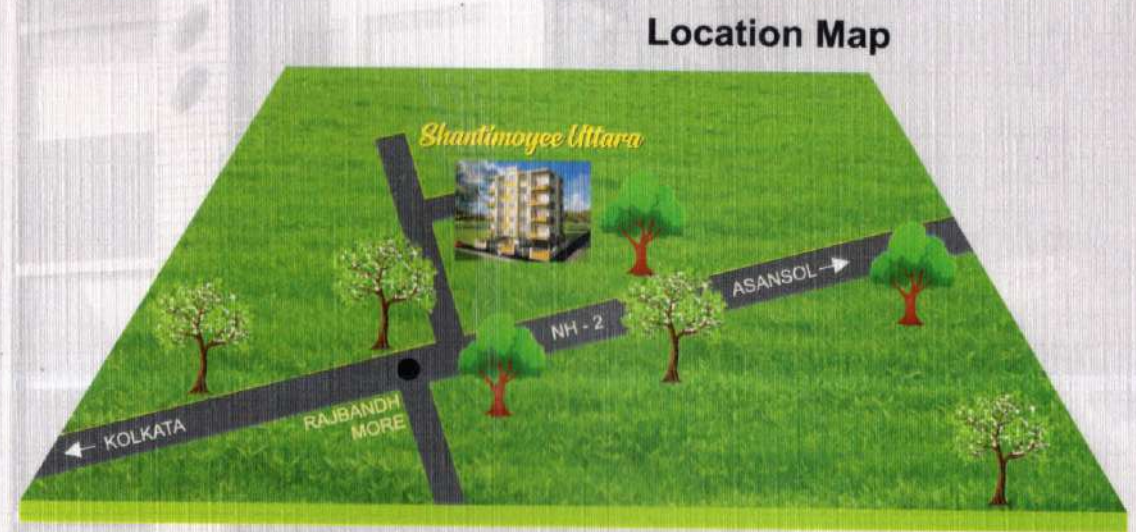
Elevation :

Modern Aesthetic Elevation to be finished with weather proof paint.

Staircase & Floor Lobby :

Marble/Kota stone in stairs and floor lobby.





DISTANCE :

SCHOOL
- 3 mins.

HOSPITAL
- 2 mins.

MARKET
- 2 mins.

COLLEGE
- 2 mins.

RAIL STATION
- 5 mins.

BUS STUND
- 3 mins.

Developed by :



: **9641980988**

Y-5, Amarabati Market Complex, Burdwan, Durgapur, West Bengal, PIN - 713214
e-mail : mbk.stu@gmail.com