

# Shantimoyee Niwas

Come, lets live together

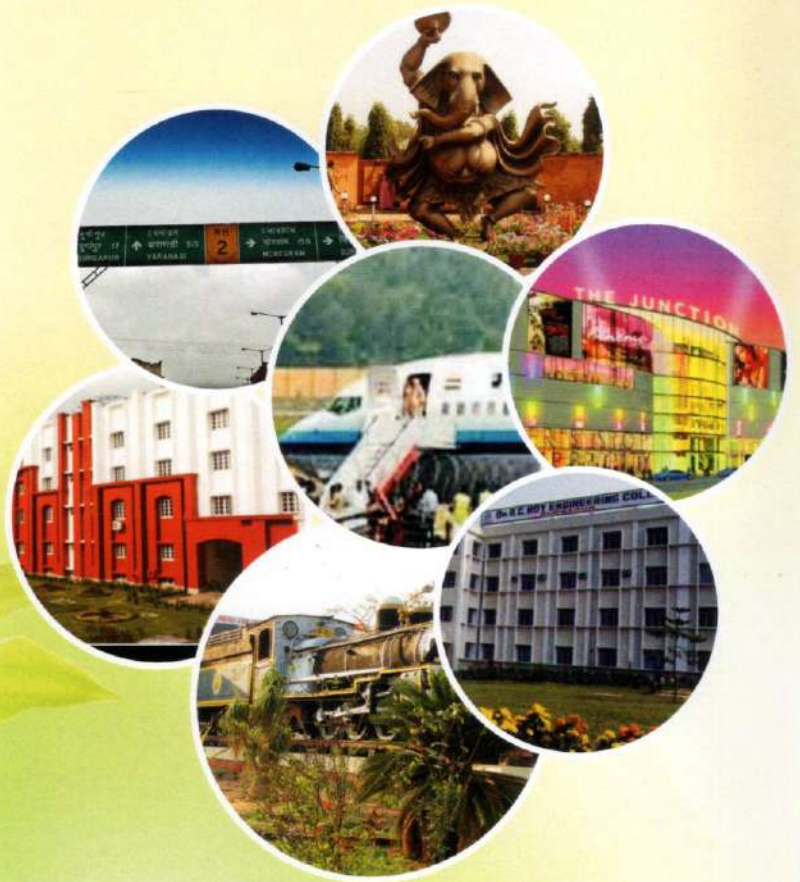


Developed by :



# The golden combination of nature & modern life

- 5 min from Mission Hospital
- 5 min from Vivekananda Hospital
- 5 min from Sub-Division Hospital
- 5 min from St. Xavier School
- 5 min from Delhi Public School
- 5 min from Banks
- 10 min from Railway Station
- 10 min from Muchipara (NH2)
- 10 min from City Centre
- 10 min from Troika Park & Kumarmangalam Park
- 25 min from Andal Airport



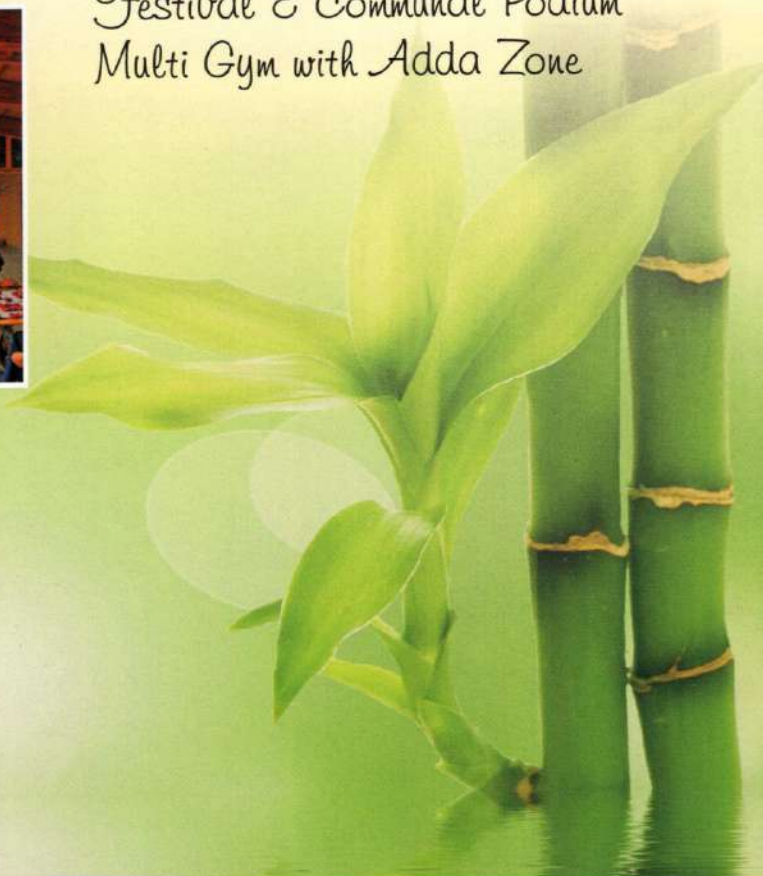
# Bonded with all time Peace

24 x 7 Security  
24 x 7 Power back up  
High Speed Elevators  
Adequate Car Parking  
CCTV Surveillance



# Printed With Smiles forever

Children Play Area  
& Kala Kendra (indoor)  
Festival & Communal Podium  
Multi Gym with Adda Zone



## Enough Reasons To Live, Experience & Discover

Personal living home atmosphere . . . . .

Built to create the magic of togetherness, designed to offer a lifestyle that is yet to be discovered, the offers mental peace, pure satisfaction & a Self-Sustainable Community.

 *"Shantimoyee Niwas"*



**External Structure :**  
RCC Framed Structure.

**Wall Finish Interior :**  
Conventional Brickwork with Cement putty.

**Flooring :**  
Ceramic Tiles - All Bedrooms & Living Rooms.

**Doors & Windows :**  
Doors - Laminated Flush door  
Door Fittings - Godrej or equivalent night latch, eyepiece and handles.

**Electrical Fittings :**  
A.C Point in one Bedroom, Cable TV and Intercom point, 15 amp & 5 amp electrical points, Concealed Copper Wiring with Central MCB / RCB of reputed make. Door Bell point at the main entrance door. Modular Switches.

## About us

A company consists of good technical personnel & bonded with engineers who have the capacity of having almost 15 years field experience under various regional, national and international banners. We are not very famous but yes we have the ability to do the quality work in stipulated time frame...



### **Kitchen :**

Heavy Duty/anti skid ceramic tiles on Floor. Granite platform & stainless steel sink Dado upto 2 ft. above the counter/platform. Electric Point for refrigerator, water purifier, exhaust fan.

### **Toilet :**

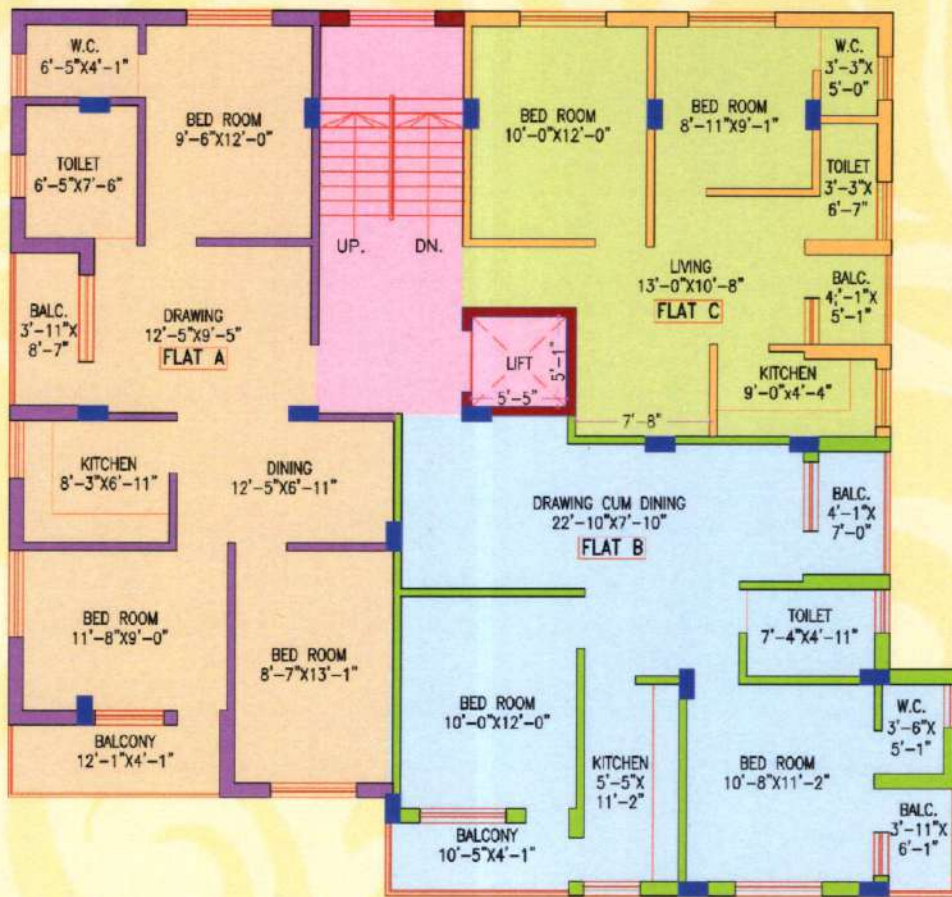
White Sanitary ware of reputed make Heavy duty/anti skid ceramic tiles on floor. Glazed ceramic tiles on the walls upto 7 ft. height. CP Fittings of reputed make. Electric point for geyser and exhaust fan. Hot & cold water (in 1 toilet)

### **Elevation :**

Modern Aesthetic Elevation to be finished with weather proof paint.

### **Staircase & Floor Lobby :**

Marble/Kota stone in stairs and floor lobby.



Typical Floor Plan

Furniture Layout





Flat	Type	Area/Sq.ft.
A	3-BHK	1087
B	2-BHK	981
C	2-BHK	668